



## **From the SIGHC Chair**

All,

Welcome to the June 2009 newsletter of SIGHC, the last issue of our newsletter before NECC. Don't forget to attend SIG-related events, including the business meeting, where we will be introducing our new officers and lay out the plans for 2009-2010. I hope to see many of you in Washington DC.

Mark van't Hooft  
Chair SIGHC (soon to be SIGML)  
[mvanthoo@kent.edu](mailto:mvanthoo@kent.edu)

## **SIGHC News**

### **SIGHC Name Change**

The name change to SIGML has been approved and the official unveiling of the new name will happen at this year's NECC conference. As a result, the urls for the SIG website and wiki will change soon. We will notify you when that happens.

### **SIGHC Survey**

In order to serve our constituents better, SIGHC (soon to be SIGML) has created a member survey which can be found online at [http://www.surveymonkey.com/s.aspx?sm=EYrqux92rxlO86xcYCM9\\_2bA\\_3d\\_3d](http://www.surveymonkey.com/s.aspx?sm=EYrqux92rxlO86xcYCM9_2bA_3d_3d). The survey will be available until Sunday night, June 28, 2009. We will use your input to do our annual planning at the NECC 2009 business meeting, which is open to any SIG member or those interested in becoming a member. Please take a few minutes to fill out the survey and let us know what you think about SIGHC. Thank you in advance for your participation!!

### **New SIGHC Officers**

Three new SIGHC Officers will officially take office at NECC 2009. They are Elliot Soloway (Chair Elect), Mischelle Grubbs (Communications Officer), and Cathy Higgins (Member At Large). Mischelle replaces Debbie Bordelon, who was SIGHC's first Communications Officer and instrumental in getting the SIG up and running. Cathy Higgins replaces Delaine Cochran, whose term as At Large Member expires at NECC 2009. Thank you to Debbie and Delaine for their service to the SIG.

Let us take this opportunity to introduce our new officers here. You can meet them face to face at the SIGHC business meeting at NECC.

### **Elliot Soloway**

Arthur F. Thurnau Professor  
Dept of EECS, College of Engineering  
School of Information, School of Education  
University of Michigan  
[soloway@Umich.edu](mailto:soloway@Umich.edu)

Over the past 30 years, Dr. Soloway has explored ways to use computing technologies to empower children to be successful learners. At the University of Michigan, in 2001, the undergraduates at the University of Michigan selected him



to receive the “Golden Apple Award” as the Outstanding Teacher of the Year. He is a co-founder and Chief Technology Officer of GoKnow Learning, Inc. (Ann Arbor, MI), a provider of educational resources for mobile learning in K-12.

### **Message from the newly elected chair of SIGML**

To embellish a bit on Alan Kay’s provocative observation of 1997, we say that: “The <mobile> computer revolution hasn’t even begun yet.” Low-cost devices with low-cost connectivity are unprecedented; it gives everyone new opportunities – opportunities that we haven’t even begun to exploit. This is not a time of incremental change; rather this is a time of exponential, non-linear, disruptive change. Our primary and secondary schools have no idea what is about to hit them. For the kids these days, mobile computing is essential to their lives. But when they enter the school door, they have to power down their mobile devices and power down their brains. For now. But schools will have to respond. In 2-4 years, at least in the developed nations of the world, every child will come to school with a connected mobile computing device. Such a situation is as inevitable as the sun rising tomorrow.

SIGML needs to take a leadership role in establishing “mobile learning” as a legitimate area of endeavor. Researchers need to explore it; policy makers need to make it a first-class citizen; parents and teachers and school administrators need to see mobile learning for what it is: the opportunity to help prepare children for a knowledge-work, global, marketplace. Our kids already see this future; it’s just we adults who need to have our visions expanded.

As chair of SIGML, I will work with SIGML members, with ISTE and with ISTE’s partners to realize the potential of mobile learning. It’s not that often that one is handed an unprecedented, unique and grand opportunity: SIGML is poised to make a real difference in lives of children and adults. Let’s work together, let’s take advantage of this once in a lifetime opportunity: to use mobile learning to re-engage children in learning, and to provide adult learners with genuinely new opportunities for learning. These changes are within our reach – now.

Warmest regards,  
Elliot

P.S. The Pearson Foundation has just produced two films that highlight mobile learning. I encourage you all to spend a few minutes reviewing these extremely well done videos.

<http://www.goknow.com/goknowshare/GoKnowCellphonesInKellerTX.mov> - Film developed by the Pearson Foundation; 7 minutes, 40 megs. Describes the use of cell phone computers in a 5th grade classroom in Keller, TX. A joint Verizon Wireless + GoKnow Learning activity.

<http://www.mobiledigitalarts.com/Series/Soloway-Norris-FINALWEB.mov> Film developed by the Pearson Foundation, 11 minutes, 90 megs, black and white. Provides a vision for "mobile learning" - and interviews with Dr. Cathleen Norris and Dr. Elliot Soloway.

#### **Dr. Cathy Higgins**

Office of Educational Technology  
New Hampshire Department of Education  
[www.cathyhiggins.net](http://www.cathyhiggins.net)

Dr. Cathy Higgins works in the Office of Educational Technology at the New Hampshire Department of Education. In her position as State Educational Technology Director, she facilitates the distribution of grant funds to support educational technology and information literacy in the schools and provides assistance to schools in planning and developing programs based on national guidelines, state standards, and current trends in ICT practices. Cathy received her B.A. from North Park College in Chicago, M.Ed. from the University of Massachusetts at Amherst, and C.A.G.S. from



Plymouth State University. In 2007, she completed her doctoral degree in Educational Leadership at Argosy University, Sarasota. Her dissertation topic was focused on the impact of digital portfolios on student engagement and student achievement.

Cathy has a passion for all things digital and all things related to creating a peaceful planet. She also loves her husband, daughter, two cats, seven chickens, and her iPhone. You can usually find her on the computer, but occasionally you might hear her singing or playing music. She loves being part of SIGML because it helps develop her knowledge base with handheld and other mobile learning technologies. Although her day job keeps her very busy, she occasionally has time at the end of the day to post to her blog and/or websites at [www.cathyhiggins.net](http://www.cathyhiggins.net).

## **SIGHC Communication Tools**

### **ISTE Community on Ning**

ISTE recently launched a networking community on Ning. SIGHC has its own group set up on this networking site at <http://www.iste-community.org/group/sighc>. We invite you to join and use this site for any community activities and networking related to mobile learning. You will need to register on the main ISTE Ning site (<http://www.iste-community.org/>) to access the SIGHC Ning.

### **SIGHC Wiki**



The SIGHC wiki continues to grow, and we always welcome more participation. Please go to <http://sighc.iste.wikispaces.net/space> to register (free!) and check it out. Just create a user name and password for yourself and start adding content. If you have ideas for topics that should be added to the wiki, please let us know, or add them yourself! Some topics we could add include:

- Mobile phones
- Podcasting
- Assessment
- Informal learning
- Research

We really want the wiki to be a resource for all of you!

### **SIGHC Website ([www.iste.org/sighc](http://www.iste.org/sighc))**

And of course, if you have updates for the SIGHC website, please send them to Mark van't Hoof ([mvanthoo@kent.edu](mailto:mvanthoo@kent.edu))

### **SIGHC Discussion Listserv ([sighc-discussion@iste-listserver.iste.org](mailto:sighc-discussion@iste-listserver.iste.org))**

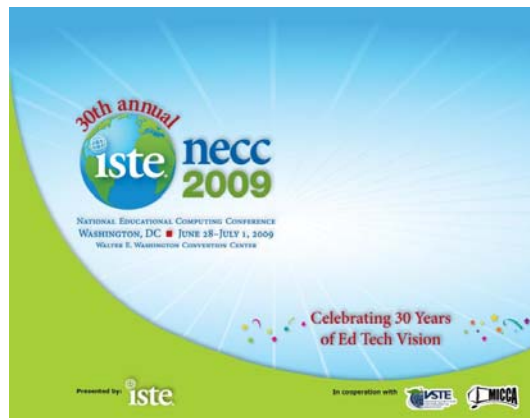
We've had a discussion listserv for a while now and we've had some questions about why it's not being used. First of all, make sure that you sign up for the listserv using the SIG Manager tool (<http://www.iste.org/inhouse/membership/myprofile/sig-manager/index.cfm?>). Note that you will need to be logged on to the site using your username and password. You would also log into the SIG Manager tool if you want to unsubscribe from the listserv.

Second, if you have questions, stories, links, articles etc. related to the use of mobile devices for teaching and learning, please post them to the listserv. Somebody has to get the discussion started. If you would like to volunteer to post something to the discussion listserv on a regular basis (say, once per month), please contact the SIGHC Chair Mark van't Hooft at [mvanthoo@kent.edu](mailto:mvanthoo@kent.edu).

### **SIGHC Announcement Listserv**

If you are a SIGHC member, please make sure you are subscribed to this listserv as well as we use it to make announcements related to the SIG, including elections, newsletters, and NECC events. Note that only SIG officers can post to this listserv. Everybody else should post to the discussion listserv.

## **NECC News**



### **NECC 2009**

Information about the 2009 conference is available here (<http://center.uoregon.edu/ISTE/NECC2009/>). Locations for the various sessions are now listed. Please consider attending our sessions!!

SIGHC will have a forum, a sponsored session, and the annual business meeting at NECC 2009. This year's SIGHC picks are posted on the SIGHC wiki at <http://sighc.iste.wikispaces.net/NECC+2009>.

### **SIGHC Sponsored Session**

Title: The Missing Link: Preparing Teachers to Integrate SmartPhones Effectively.  
Description: Teachers are vital to the effective integration and advocacy of this powerful 1:1 computing option. Learn to develop meaningful and effective smartphone classroom strategies.  
Presenters: Ann Cunningham and Kristin Bennett  
Date and Time: Monday, June 29, 2009, 11am-12pm  
Location: WWCC 147 A

### **SIGHC Annual Business Meeting**

Date and Time: Monday, June 29, 2009, 4:45pm-6:15pm  
Location: WWCC 209 B

The agenda will be posted to the SIGHC wiki before the NECC conference.

## **SIGHC Forum**

Based on the survey responses and our business meeting at NECC, we have come up with what we think is an awesome forum for the 2009 NECC conference.

Title: Mobile, Connected, and Learning with Cell Phones.  
Description: Join SIGHC at the World War II memorial in DC for a hands-on activity with camera phones, the web, and QR codes. Bring your phone!!  
Presenters: Thomas McNeal and Mark van't Hooft  
Date and Time: Tuesday, June 30, 2009, 3-5 pm  
Location: World War II Memorial  
(See the SIGHC conference page at <http://sighc.iste.wikispaces.net/NECC+2009> for directions)

## **Feature Articles**

Are you doing some cool stuff with mobile devices? Do you have any good stories to tell? Fellow SIGHC members would love to hear from you! Please submit your ideas and stories to the newsletter. Heck, we'll even help you write up your story if need be! Please contact any of the SIGHC officers for details (contact info is at the end of the newsletter)!

### **AlleghenyCONNECT**

#### **Helping Students Develop the Skills for Tomorrow's Global Marketplace**

---

By Tim Devlin and Sarah McCluan

In the sleepy hills and valleys of southwestern Pennsylvania's Allegheny County, education is changing at a rapid pace.

Future physicians are diagnosing patients in virtual hospital emergency rooms. Students are engrossed in the Eastern traditions being taught in their Mandarin Chinese classes. Children's eyes widen in amazement as they tour the San Diego Zoo (Note: or wherever) from the comfort of their classrooms.

Education has changed. But thanks to AlleghenyCONNECT, students in Allegheny County now have the opportunity to develop the skills they will need for the 21<sup>st</sup> century global marketplace.

### **Just what is AlleghenyCONNECT?**

AlleghenyCONNECT is a new, ultra high-speed computer network that will soon connect 41 suburban school districts and four career and technical schools. By July 2009, 165 school buildings will be connected to the private resource-sharing network, and an additional 60 schools are scheduled to be connected to the network later in the year.

AlleghenyCONNECT has enabled school districts to share educational resources on a network that is 100 times more efficient than current Internet connections. Through this network, students can connect with peers and educators in the county, across the state, and throughout the nation.

Thanks to funding from federal, state and local sources, teachers, administrators, students, and community groups can now foster public education and help kids truly be their best. Through this remarkable web of collaborative partnerships, AlleghenyCONNECT helps school district save money by allowing teachers to acquire better educational resources at lower prices through, among other means, consortium purchasing.

Videoconferencing equipment, professional development, and best practices documents are being given to each school district in an effort to assist classroom teachers engage their students in activities around the world.

Starting in August 2009, AlleghenyCONNECT will help schools link with community resources so students can develop skills they need for tomorrow's global marketplace.

Education has changed. With AlleghenyCONNECT, students will be ready to meet their futures.

For additional information, contact Tim Devlin at 412-394-4533,  
[timothy.devlin@aiu3.net](mailto:timothy.devlin@aiu3.net) or on the web at [www.aiu3.net](http://www.aiu3.net)

## **And Finally...**

As always, thanks to everybody who contributed to this month's newsletter. Don't forget to participate by submitting articles, or adding content to the SIGHC wiki ☺. Its success is depends on YOU!

If you have any news or info for a future newsletter, please send it to Mischelle Grubbs. Until the next issue...

Mark van't Hooft  
Chair  
[mvanthoo@kent.edu](mailto:mvanthoo@kent.edu)

Mischelle Grubbs  
Communications Officer  
[grubbsm@nhsd.net](mailto:grubbsm@nhsd.net)

Delaine Cochran  
Member At-Large  
[dcochran@ius.edu](mailto:dcochran@ius.edu)

Cathleen Norris  
Member At-Large  
[Norris@coe.unt.edu](mailto:Norris@coe.unt.edu)

And to join us in June at NECC are

Elliot Soloway  
Chair-Elect  
[Soloway@umich.edu](mailto:Soloway@umich.edu)

Cathy Higgins  
Member At-Large  
[CHiggins@ed.state.nh.us](mailto:CHiggins@ed.state.nh.us)