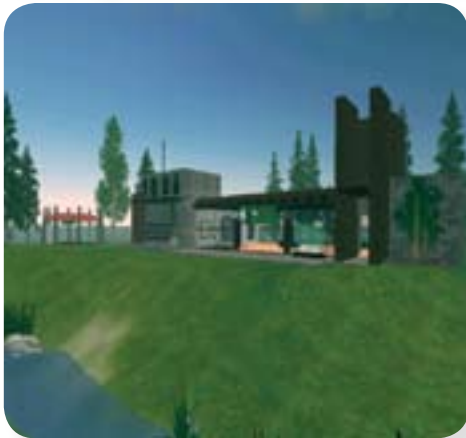


ISTE Opens Island in Second Life



ISTE's new headquarters building in Second Life is home to many networking and educational events.

When ISTE launched its presence in Second Life (SL) in fall 2006, there were approximately 80,000 residents in the multi-user virtual environment. Today, more than 7 million avatars, representing individuals, roam the virtual world. ISTE's SL community claims 1,400 members.

Because of this growth, ISTE has purchased a new, private island. The space has presentation, collaboration, and social areas, and a variety of specialized skyarks. "Our members are

worldwide, so they don't get a chance to interact very much. This simulation allows us to approximate real-time, in-person interactions," said Jennifer Ragan-Fore, ISTE's general membership program director.

Interest is rising among educators in exploring this technology specifically for teaching and learning. Currently, 30 of ISTE's SL members are docents on the new island. Docents volunteer for weekly shifts to orient newcomers and support a variety of in-world events, including weekly networking socials. ISTE also hosts guest speakers, show & tell sessions, and fireside chats. Learn more at <http://www.iste.org/secondlife/>.

Connecting, Convening at NECC

They say NECC is about making connections! I can tell you from first-hand experience how true that is. This year, I attended NECC for the first time. After the opening night keynote presentation, I walked to the Georgia Aquarium for the social event. As I stood in the lemonade line, a woman approached me and asked if I had grown up in Ohio. I said, "Yes." Then she asked if I had graduated from Struthers High School.

I asked, "Who are you?," and as soon as the words left my mouth, I realized that standing before me was Allison Edwards ... my high school speech teacher from 1971! Aside from the fact that it had been 36 years since I last saw her, the real irony is that just last December, I was asked to write a two-page answer to the following question, "What were the factors that influenced you to become a teacher?" You guessed it—I wrote about Allison Edwards! She was, in fact, the reason I became a teacher in the first place. Now *that* is making a connection!

—Carole Colburn, ISTE's 2007 Outstanding Teacher Award winner, is a technology literacy teacher in Howell (Michigan) Public Schools and a member of the Michigan Association of Computer Users in Learning.



Former teacher (Edwards) and student (Colburn, right) reunite at NECC 2007 after 36 years.

Recurring Themes



New Board President Trina Davis asks NECC 2007 audience to think globally, act locally.

In her President's welcome address at the NECC 2007 opening keynote, Trina Davis outlined three challenges to thousands of NECC attendees. They bear repeating here because ISTE members can expect to see them manifested in a variety of ways throughout the next year.

1. Join ISTE in working for change by focusing less on technology and more on learning. Our emphasis should and must be on providing an engaging, authentic learning experience—using technology appropriately and effectively to make that happen.
2. Embrace global learning and the excitement of leading student learning beyond the limits of classroom walls, national borders, or even time. Learn with and from education communities all around the world to meet the needs of all learners.
3. Grow in your role as advocates to change the way we teach, so that all learners can acquire the skills they need to produce, innovate, and actively participate in this digital age. Be an informed, passionate voice for embracing the future and the limitless possibilities that technology affords, while serving as a catalyst for transforming education.

For the full text of Davis's NECC 2007 Welcome Address, visit <http://www.iste.org/TrinaDavis2007Speech>.